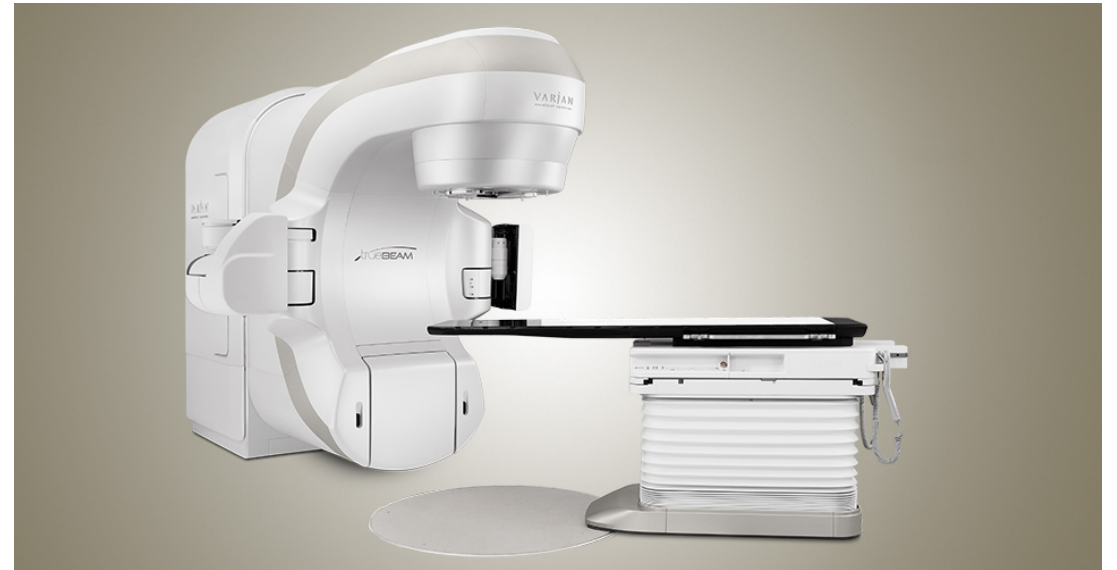


Your department purchased a new TrueBeam.
Describe to me the Acceptance Testing process.

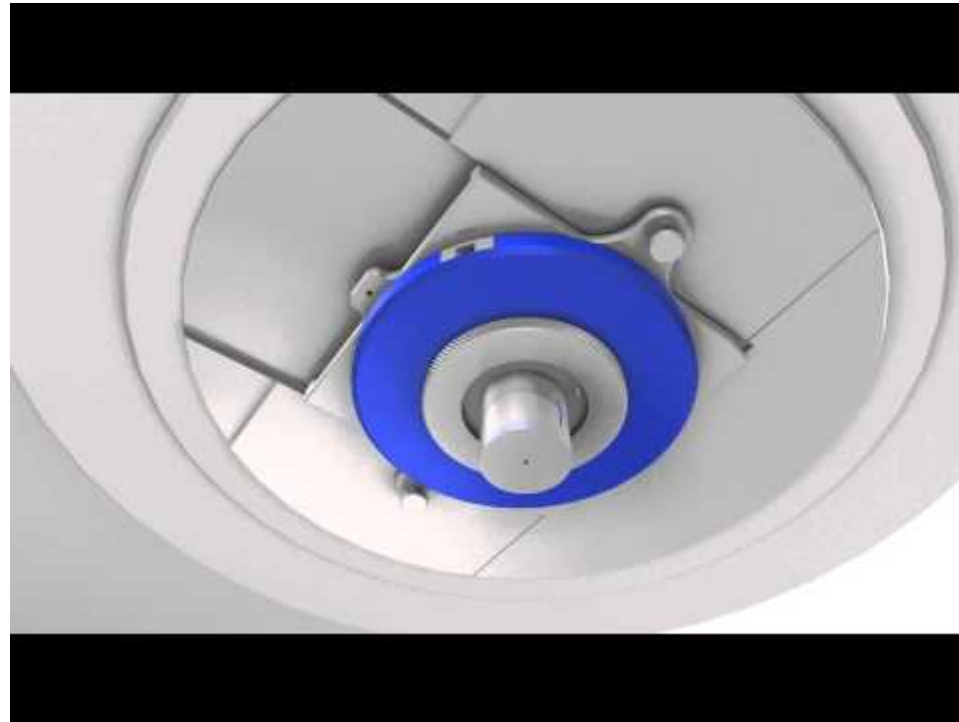


Follow Up Questions

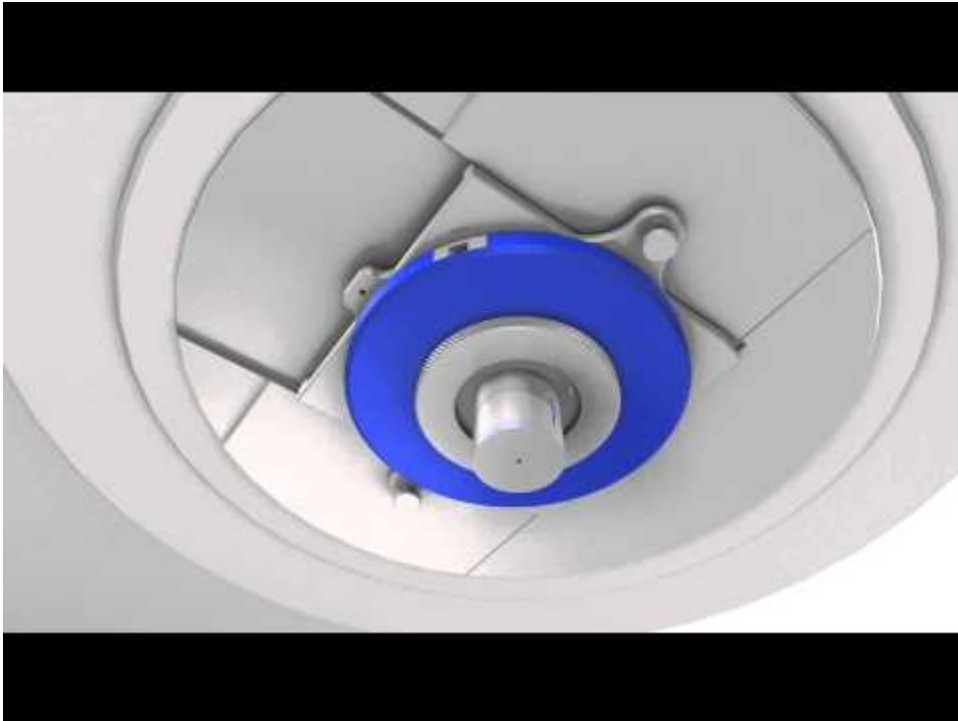
- How does acceptance testing differ from commissioning the new accelerator?
- How do you determine what needs to be tested in acceptance testing?
- Would any of this change if the new accelerator was to be matched to an existing linac?



What is this device? How would you commission its use?

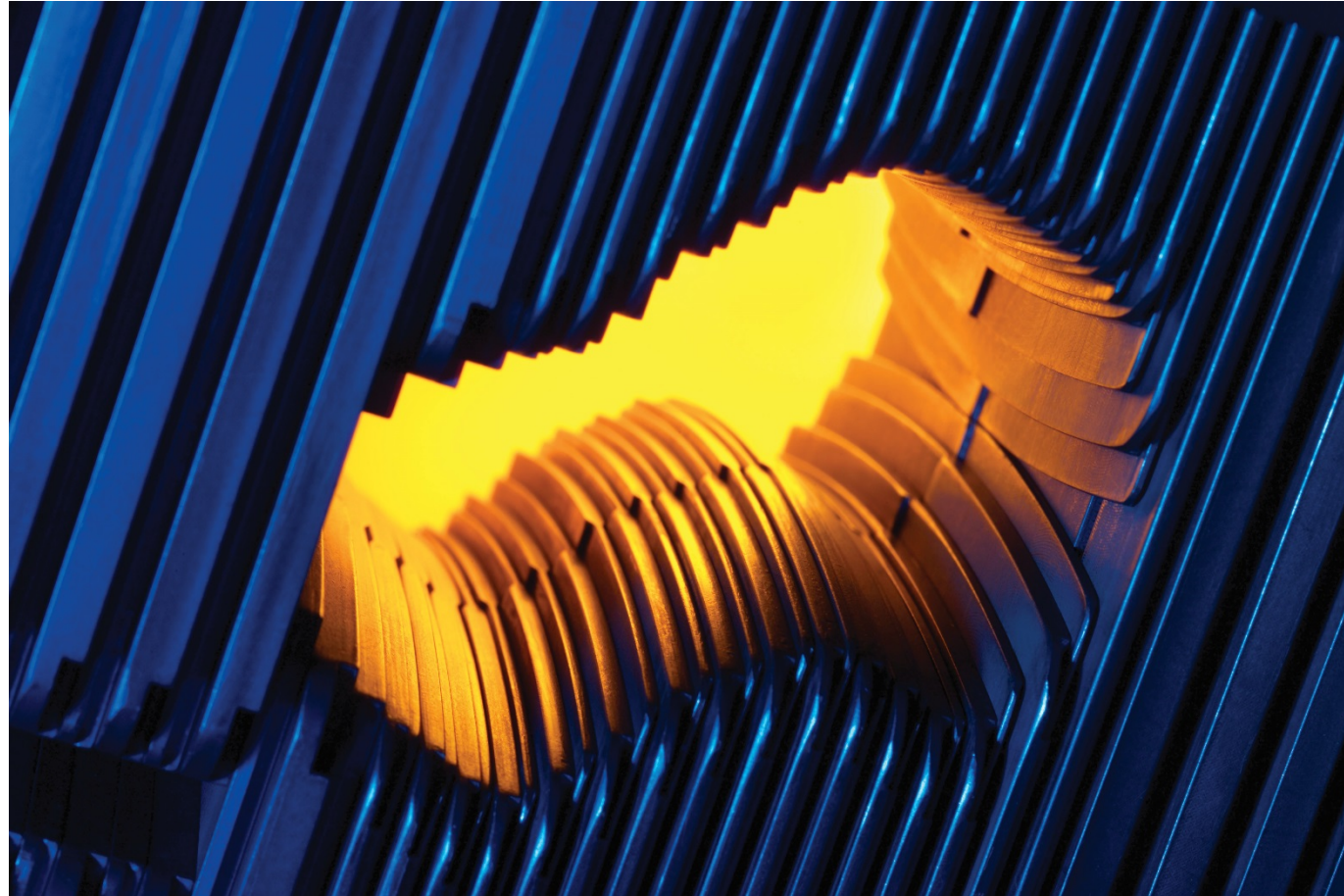


Follow Up Questions



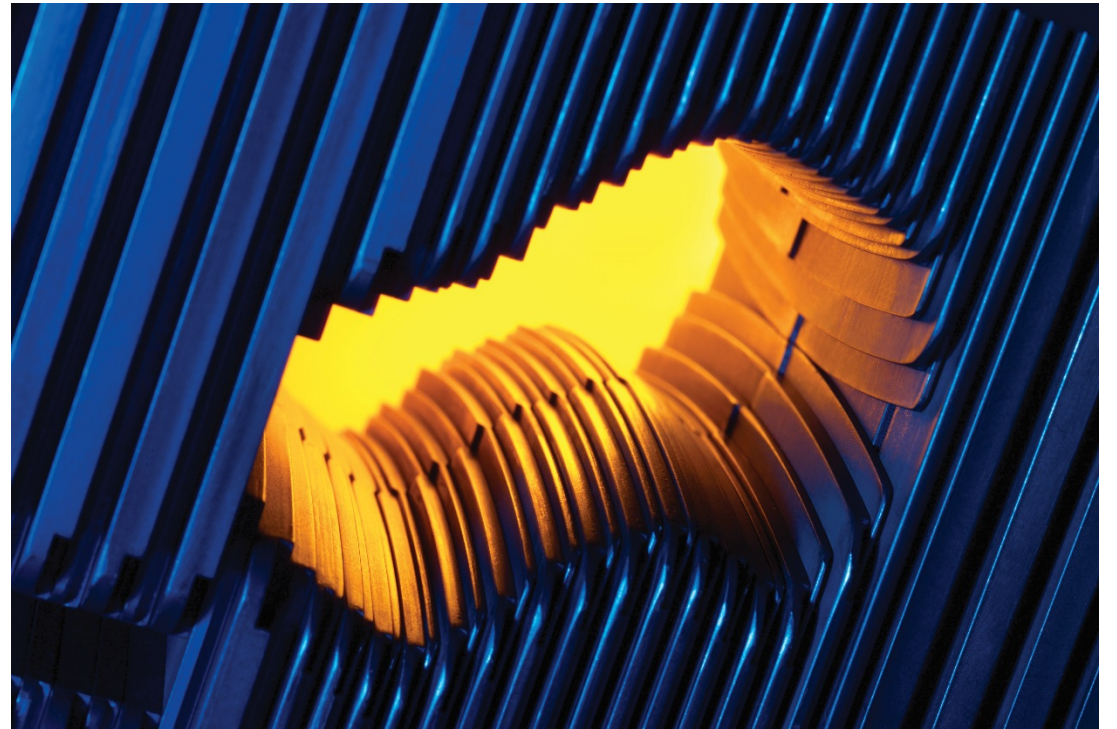
- What measurement considerations should you pay attention to?
- How would you measure the output factors?
- Are there alternatives to this device?
- What are some pros and cons of this treatment technique?

What is this device? How would you commission it?

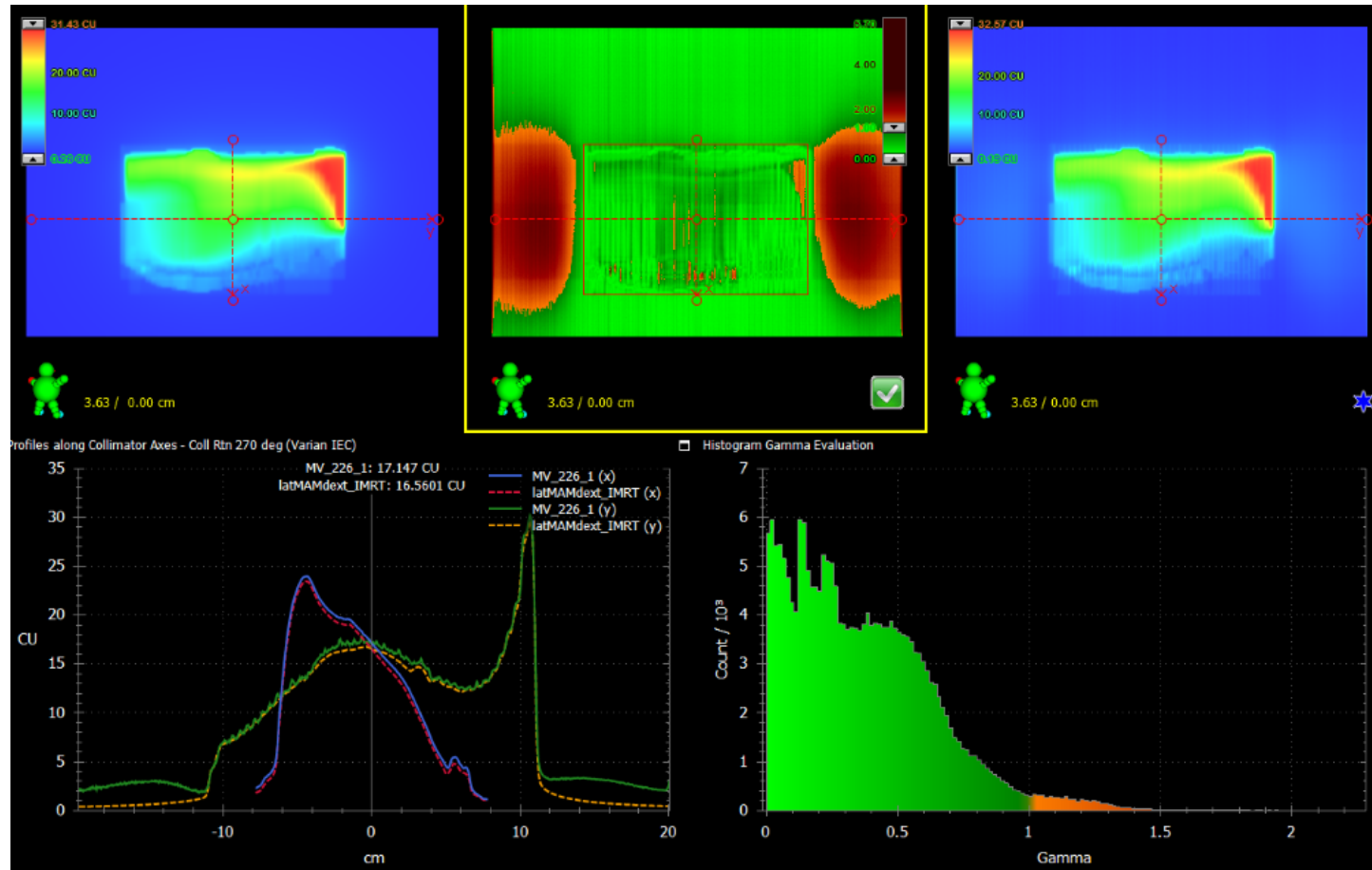


Follow Up Questions

- How would you commission this devices use for IMRT?
- What additional considerations are there for VMAT commissioning?
- Which measurements do you need to repeat for a matched linac with the same device?
Would you expect anything to be different?



What comparison is being made in this image?



Follow Up Questions

- Given the measurement setup shown in the top image, what do you think might be some sources of disagreement in the comparison?
- What is the clinical role of this comparison?
- How is this comparison evaluated or deemed acceptable?

