

What is this device?



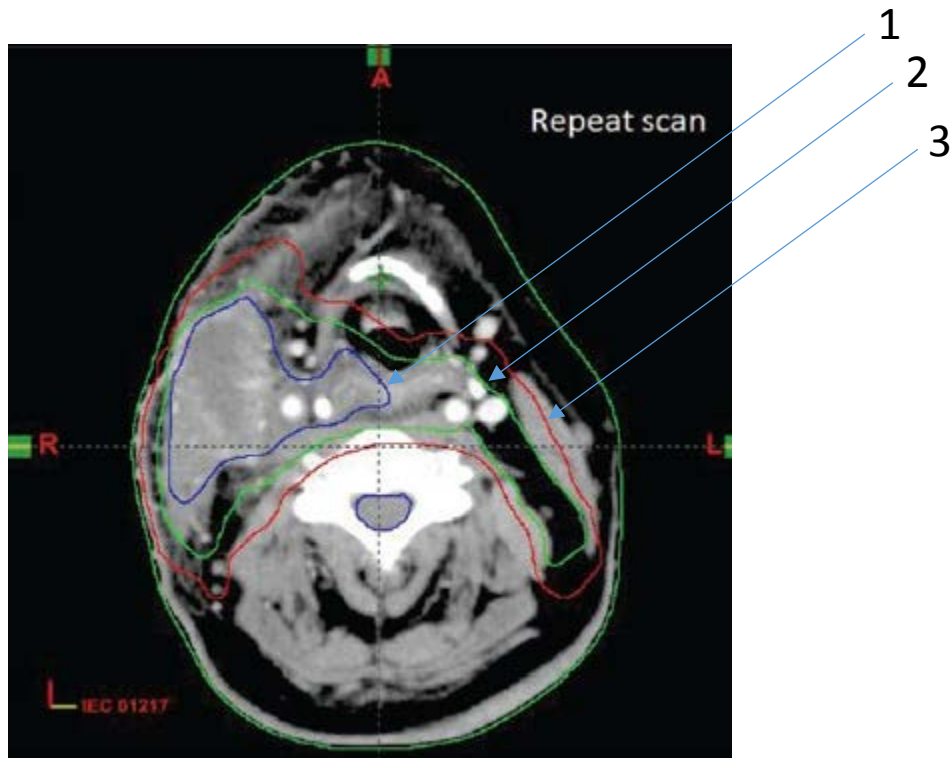
- What is its purpose in radiation therapy?
- What type of QA does it require?
- Are there alternatives to this device?

What is this?

- How is it used?
- Describe the geometry, placement, and characteristics for one manufacturer.
- What are some of the pros/cons of the placement within the treatment head?
- Why are the tips rounded in this picture?



What are the three labeled treatment volumes?



- How are the volumes defined?
- Would the volumes used be different if motion were involved?
- How should you decide on margins for the volumes?